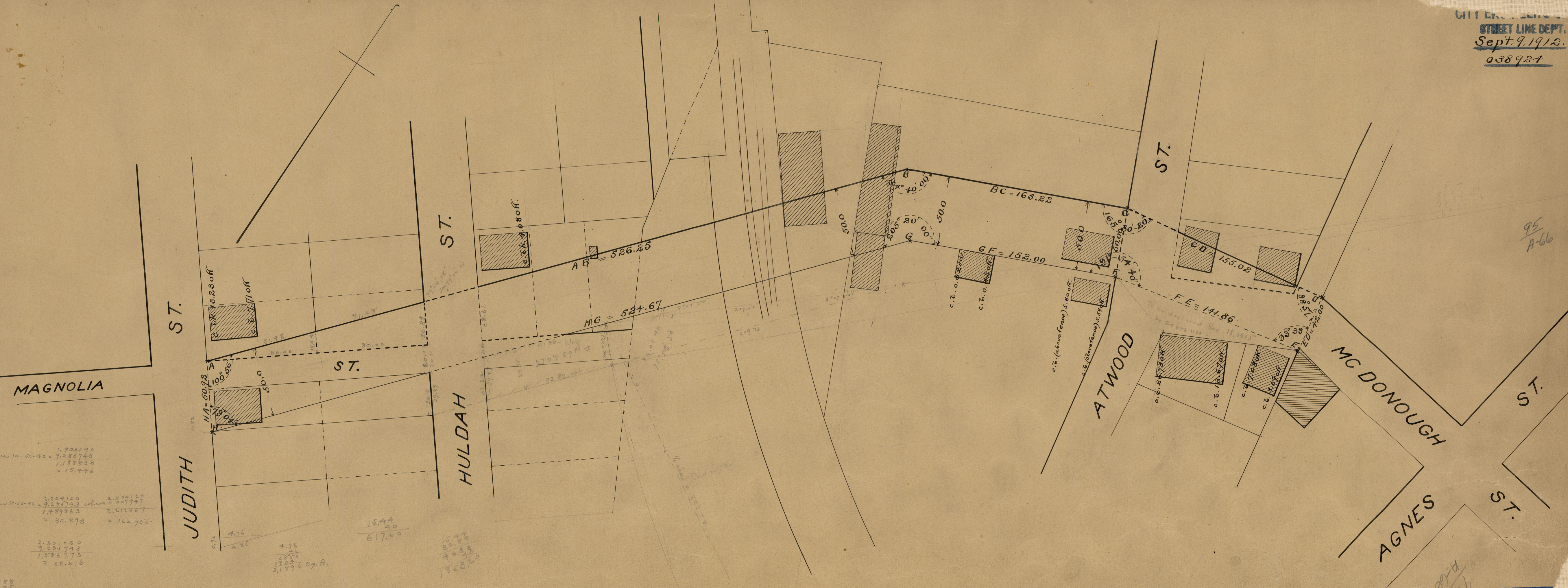


95  
 A-66

95  
 A-66



|   |   |  |
|---|---|--|
| 100-56<br>90<br>10-56   | 100-55-42<br>90<br>10-55-42                   | 100-55-42<br>90<br>10-55-42                  |
| 80 = 1.903090<br>tan 10-56 = 9.285947<br>1.189637<br>= 15.454     | 1.903090<br>0.607936<br>1.911646<br>= 81.479  | 1.903090<br>9.285743<br>1.188633<br>= 15.476 |
| 160 = 2.204120<br>7.285947<br>1490067<br>= 30.908                 | 2.204120<br>0.207956<br>2.312076<br>= 162.958 | 2.204120<br>9.285743<br>1.489863<br>= 30.893 |
| 200 = 2.301030<br>9.285947<br>1.586977<br>= 38.634                | 2.301030<br>0.722205<br>1.586773<br>= 38.616  | 2.301030<br>9.285743<br>1.586773<br>= 38.616 |
| 0.72 = 4.963788<br>tan 10-55-42 = 0.714257<br>0.678040<br>= 4.764 | 4.963788<br>0.722205<br>0.685993<br>= 4.8528  | 4.963788<br>0.722205<br>0.685993<br>= 4.8528 |

15.44  
40  
617.60

15.44  
40  
617.60

15.44  
40  
617.60

15.44  
40  
617.60